

CITY OF BEAVERTON

ADDENDUM #2

INVITATION TO BID FOR THE CONSTRUCTION OF CITY HALL TENANT IMPROVEMENTS

SOLICITATION #3252-18B

DATE: August 11, 2017
TO: All Interested Persons
FROM: Terry L. Muralt, CPPB, Purchasing Agent

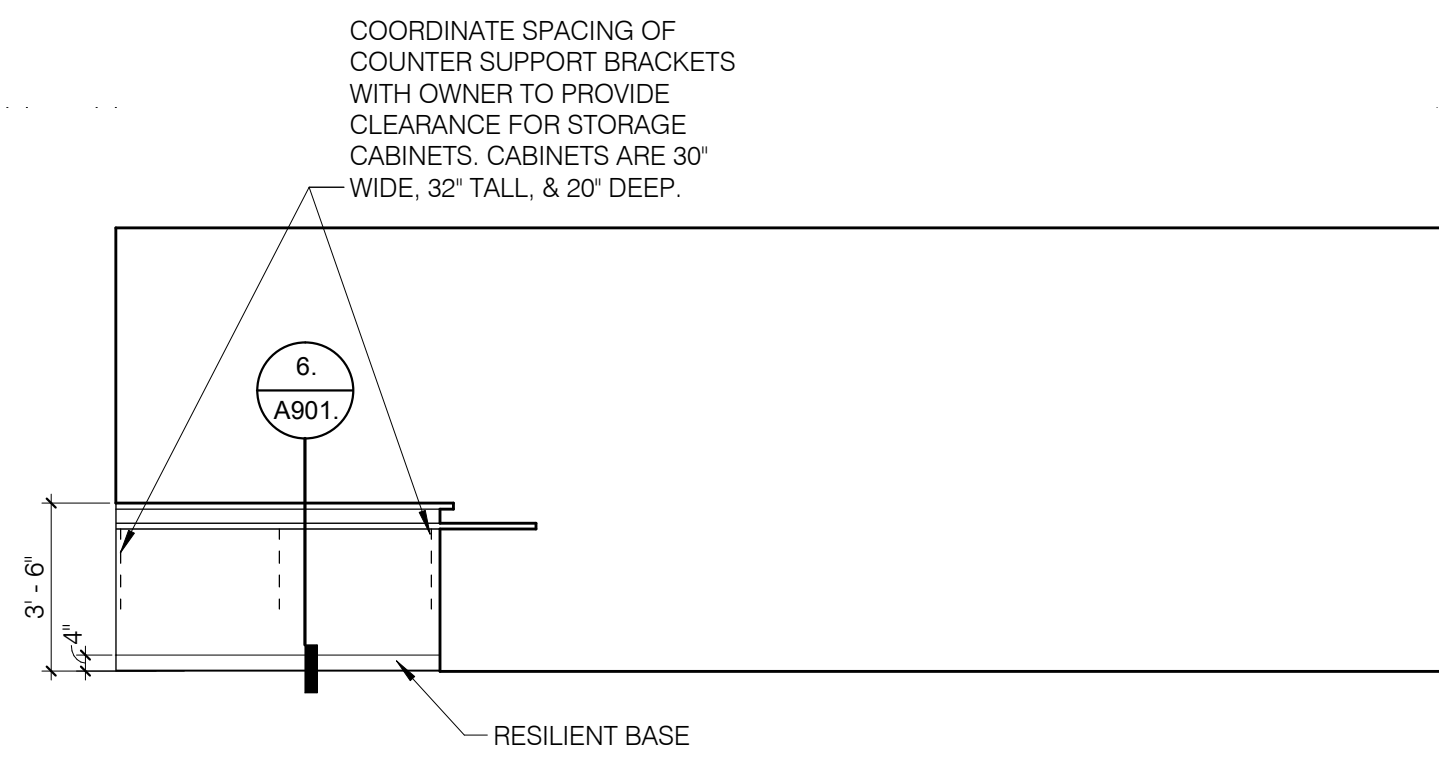
The following additions, deletions, corrections and/or clarifications are made to the solicitation documents for this project. Any changes made by this Addendum replace only the portion of the words or paragraphs specifically mentioned herein and the balance of the solicitation document remains the same and in full force. It is the responsibility of the bidders to conform to this Addendum. **All Bidders shall acknowledge receipt of this Addendum on Section 6: Signature Page.** All questions regarding this addendum should be directed to Terry Muralt, Purchasing Agent.

CHANGES TO THE SOLICITATION

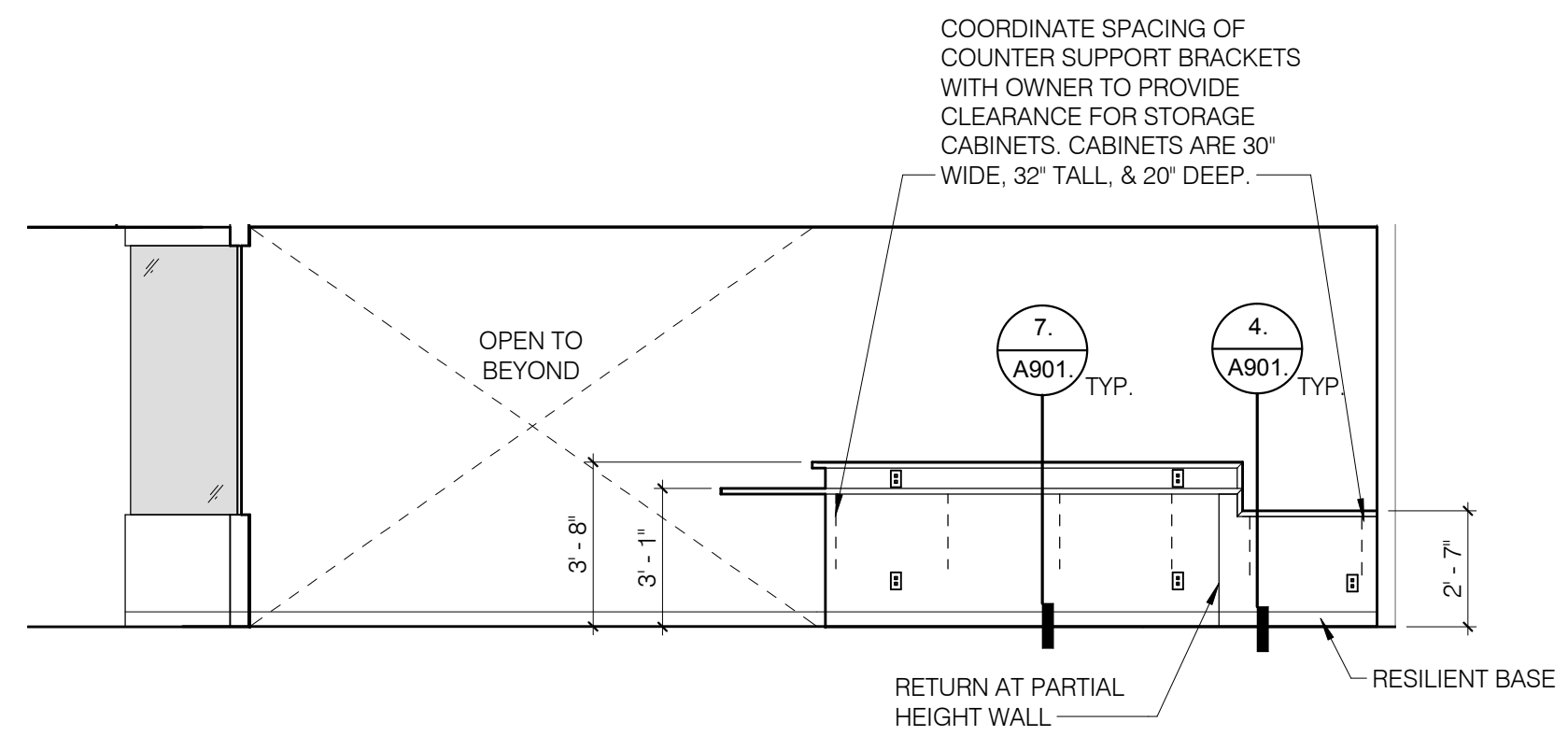
1. On drawings A201 and A401: At the low partition with frameless glass assembly, the low partition should be labelled as type "S3.1N-". This partition assembly is not fire-rated.
2. Updated drawings for A401 and A901 –see attached.

FREQUENTLY ASKED QUESTIONS

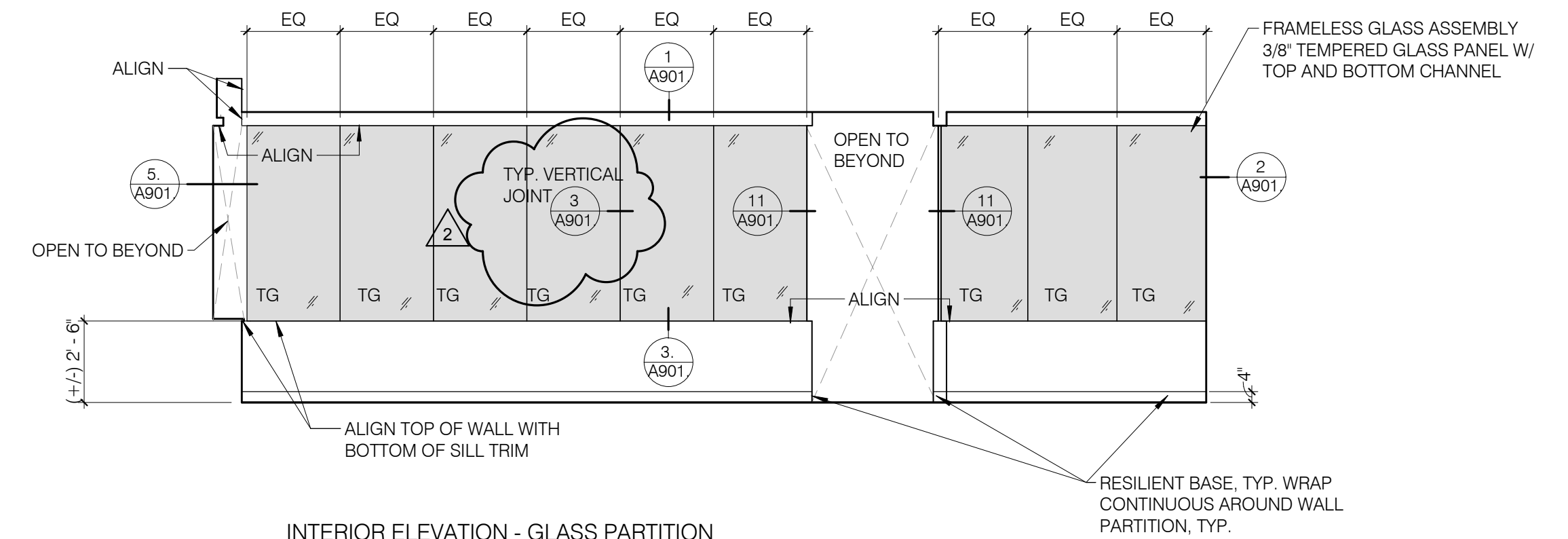
1. The drawings and/or specifications do not appear to include a glazing detail for the vertical, 3/8" glass wall butt-joints. Can you provide that glazing detail?
 - **HEA response:** See attached updated drawings A401 and A901 showing joint detail.
2. The door schedule provides for (3) Frame type B, glazed door side lights (appx 36" x 98"). Details and the door schedule seem to indicate that these side lights are being glazed with salvaged glass (including one, 1hr rated light.) Can you confirm that the proposed glazing scope does not include any new glass for side lights?
 - **HEA response:** The three doors with type B door frames have a glass side lite integral with the door frame. Per the door schedule notes, these doors are salvaged doors that are being reused. Note that the entire door assembly including door, door frame, and glass panel are to be reused. The door hardware will need to be modified.



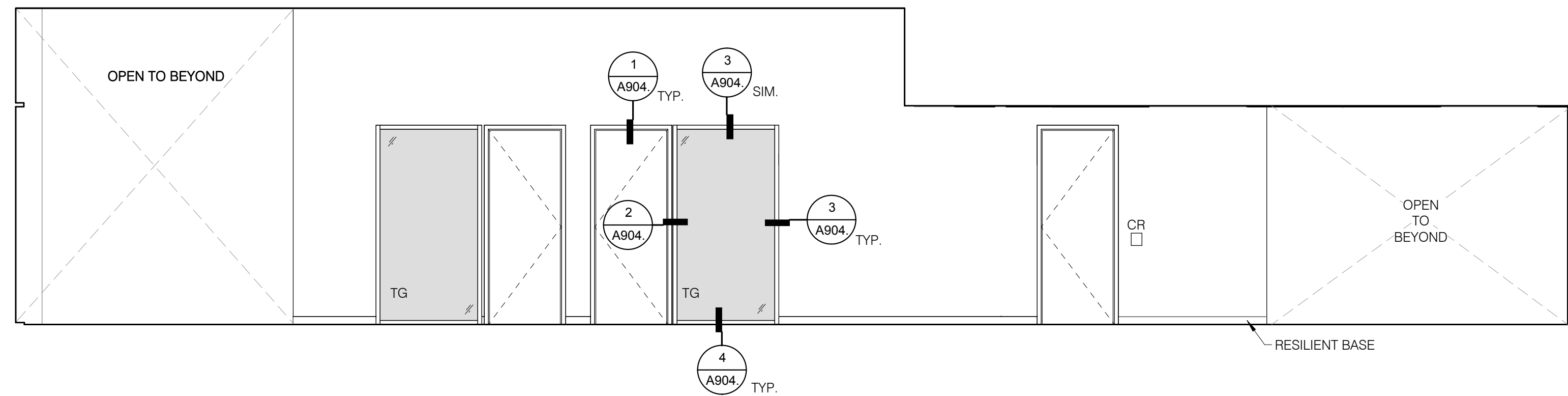
3
A401 TRANSACTION COUNTER - EAST
1/4" = 1'-0"



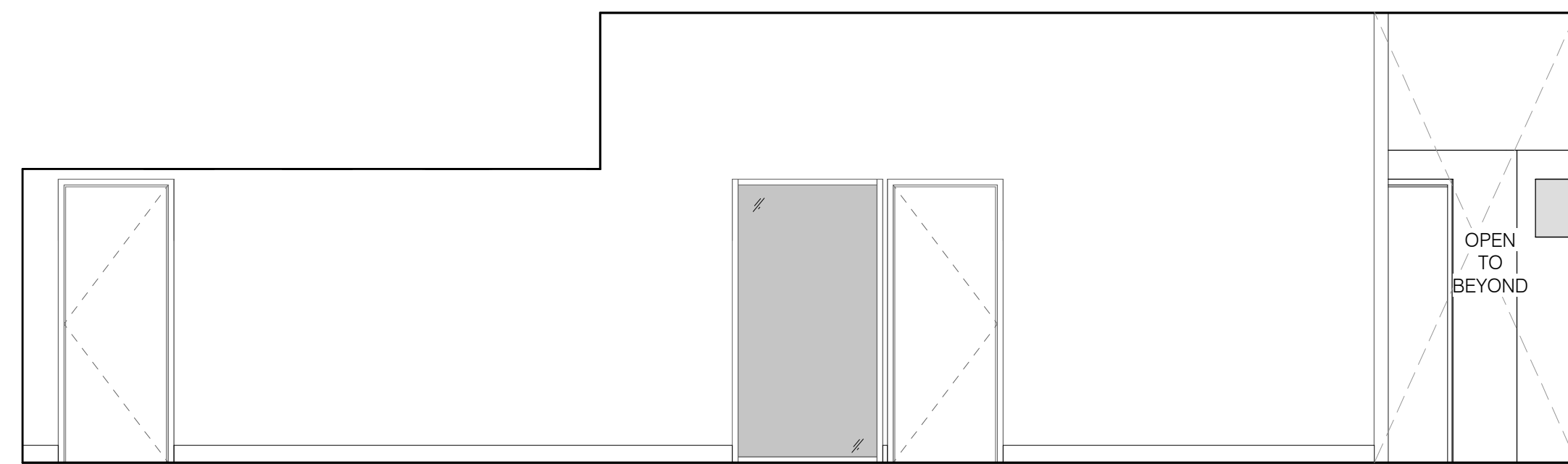
2
A401 INTERIOR ELEVATION - TRANSACTION COUNTER NORTH
1/4" = 1'-0"



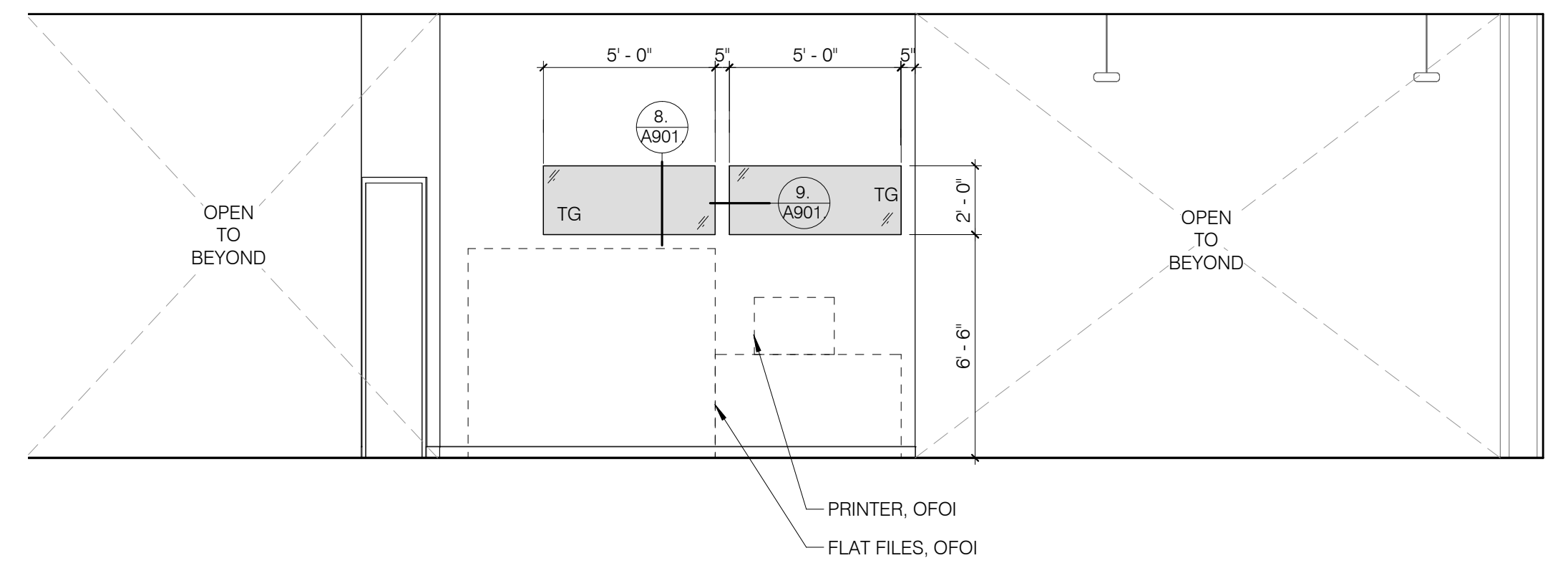
1
A401 INTERIOR ELEVATION - GLASS PARTITION WALL
1/4" = 1'-0"



4
A401 INTERIOR ELEVATION - SOUTH OFFICES
1/4" = 1'-0"



6
A401 INTERIOR ELEVATION - NORTH AT CONFERENCE ROOM & COPY
1/4" = 1'-0"



5
A401 INTERIOR ELEVATION - EAST OFFICE
1/4" = 1'-0"

Hennebery Eddy Architects Inc.

921 SW WASHINGTON STREET SUITE 250
PORTLAND OREGON 97205
503 227 4860 TEL
503 227 4920 FAX
www.henneberyyeddy.com
CITY OF BEAVERTON

BEAVERTON BUILDING
2ND FLOOR FINANCE
TENANT IMPROVEMENT
12725 SW MILIKAN WAY
BEAVERTON, OR 97006

HEA Project no. 16008
Date: 05.01.2017
PERMIT SET / CONSTRUCTION SET

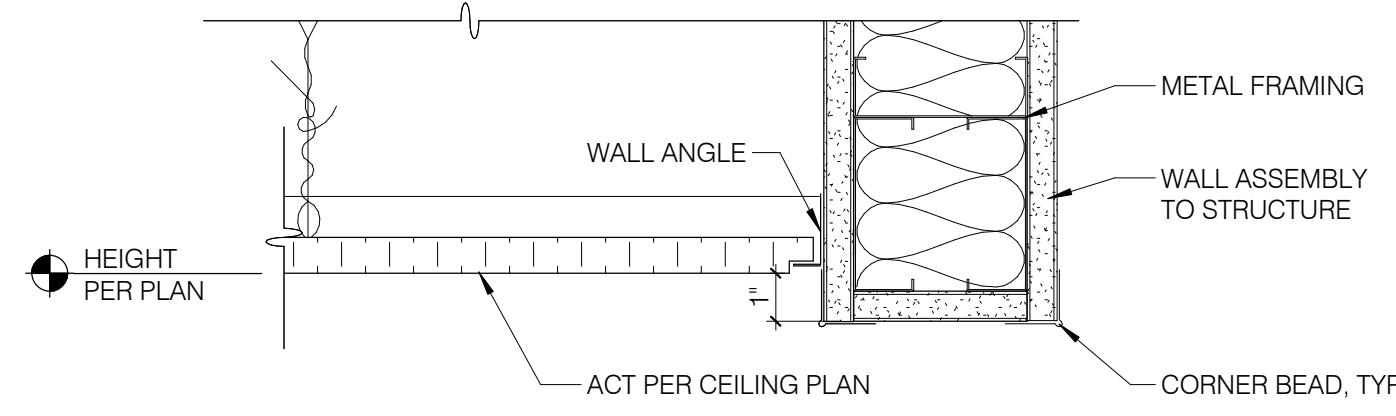
Revisions:
2 | 08/09/17 | Bid Addendum

PERMIT SET / CONSTRUCTION SET

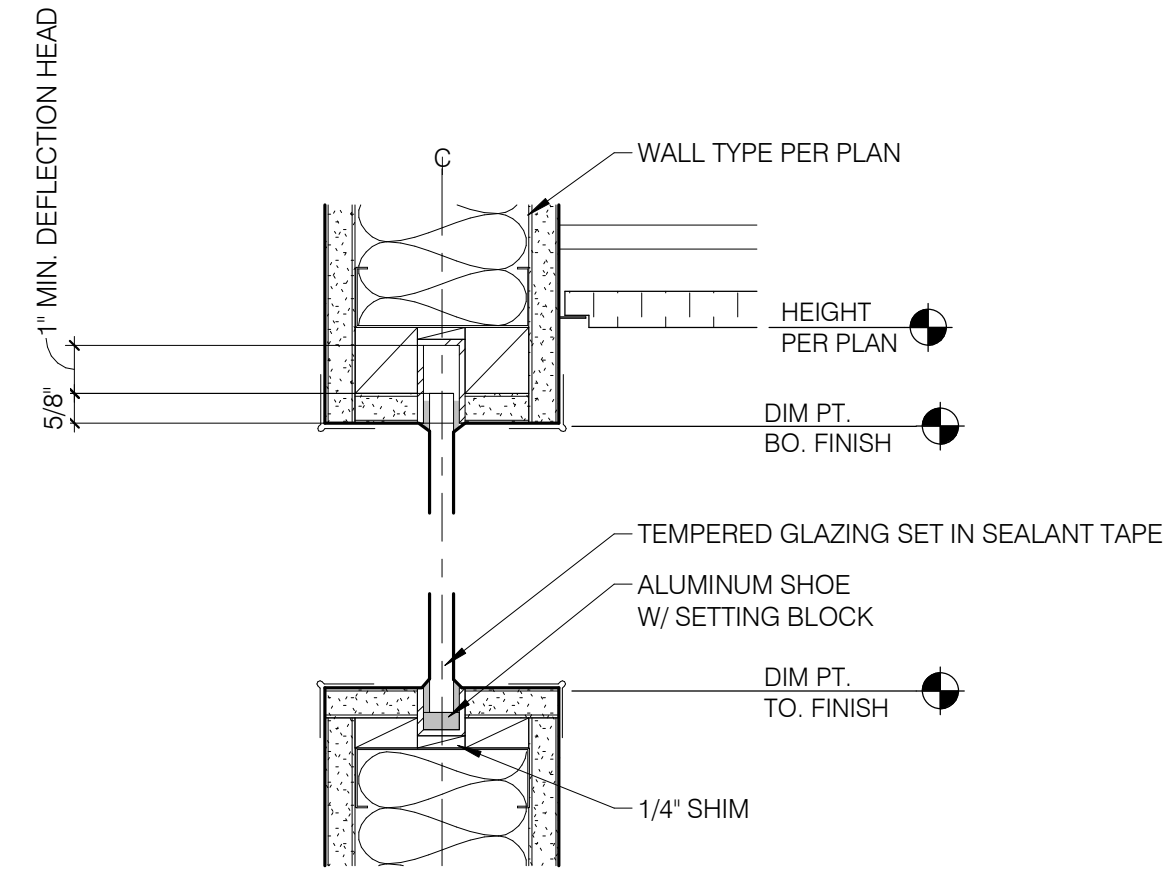
Drawn by: CJ
Checked by: DP
Sheet:

INTERIOR ELEVATIONS - SECOND FLOOR

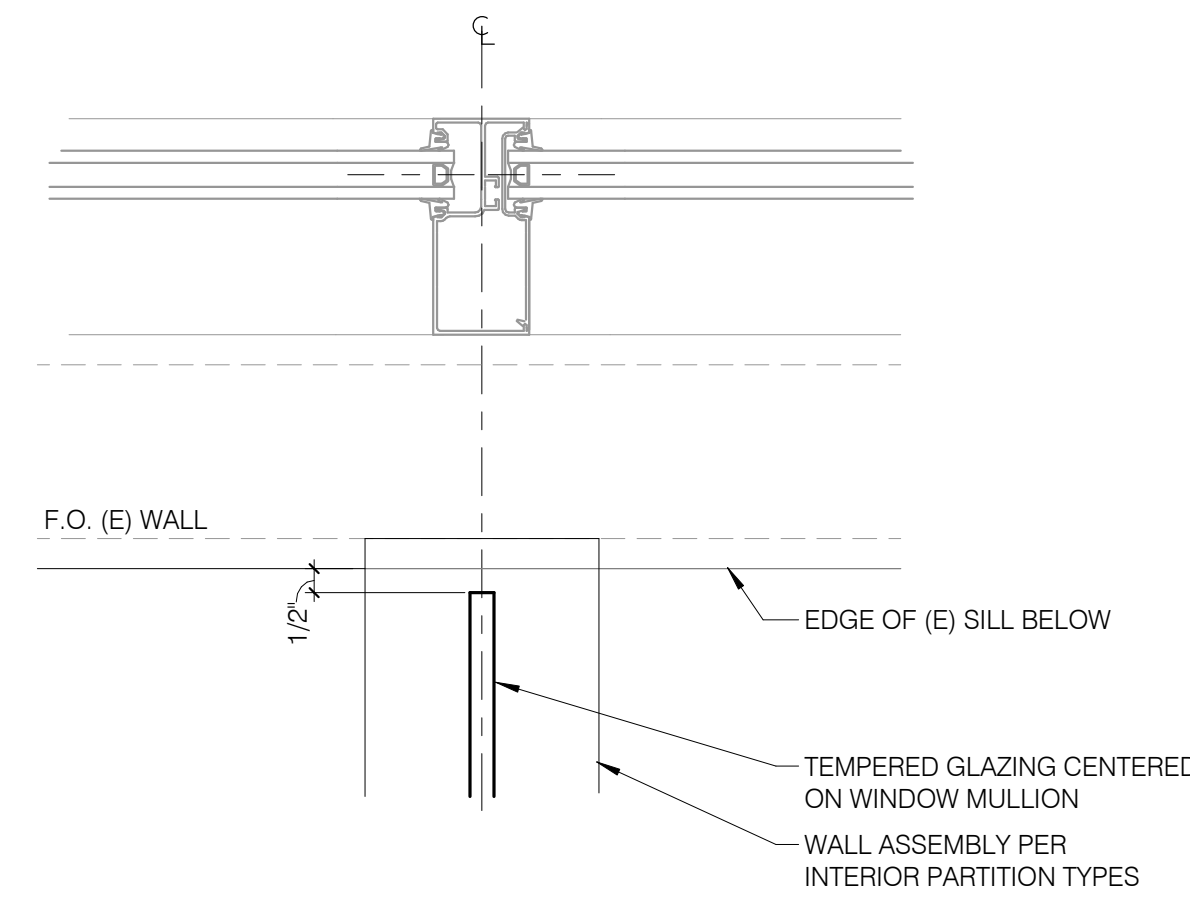
A401
Copyright 2016 Hennebery Eddy Architects, Inc.



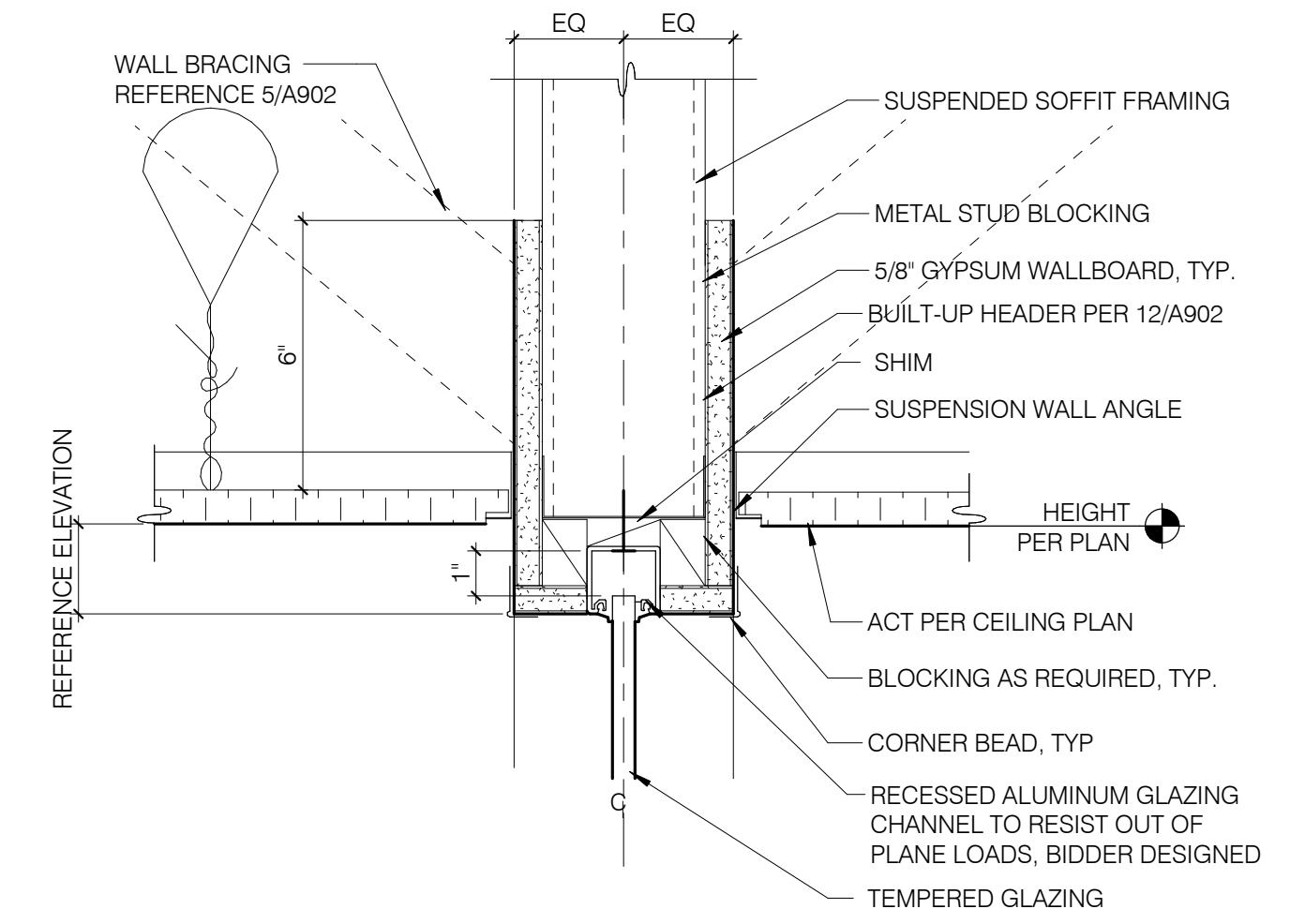
10. CEILING TRANSITION - GYPSUM BOARD TO ACT.
A901 3" = 1'-0"



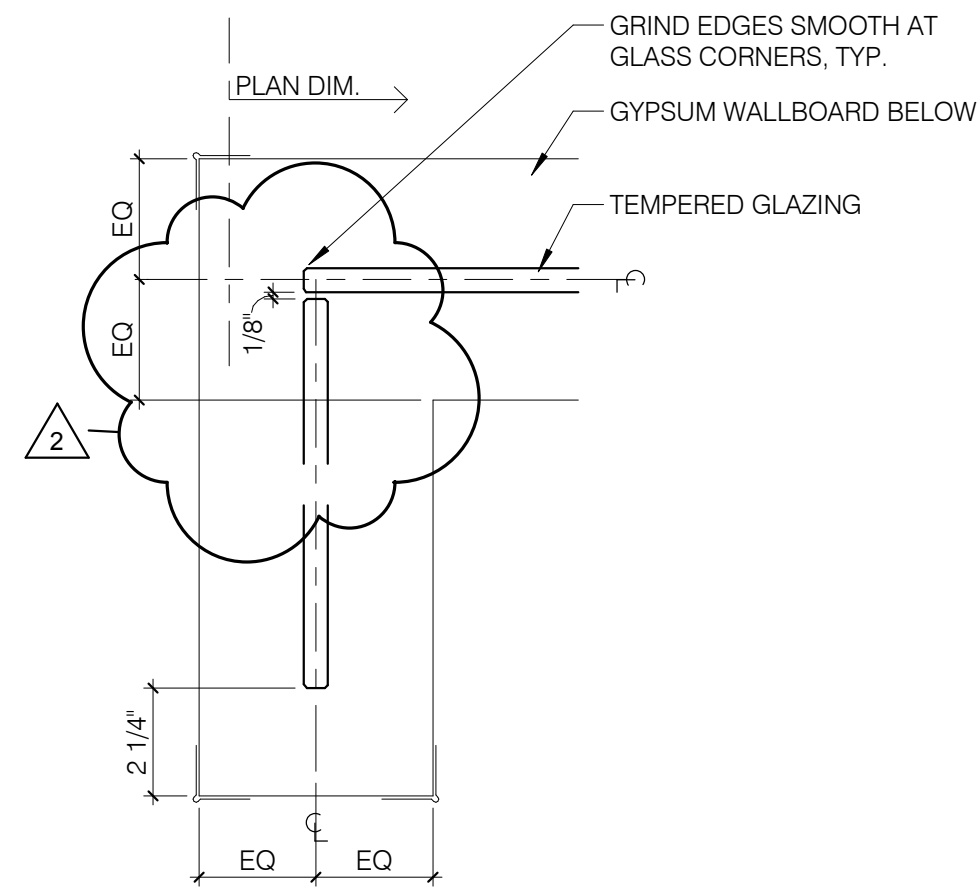
8. TRANSON RELITE - HEAD & SILL
A901 3" = 1'-0"



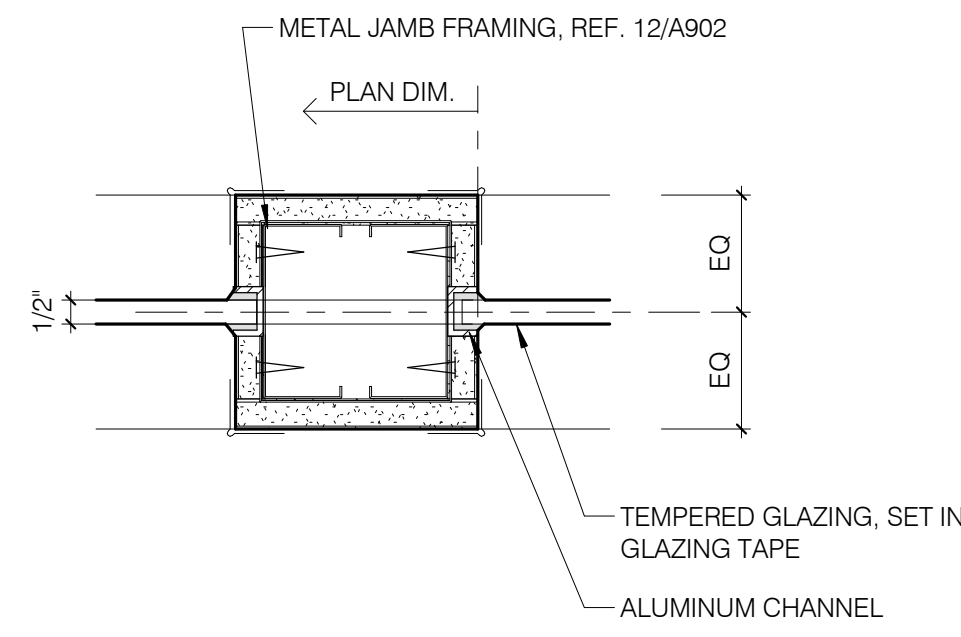
5. WALL AT (E) MULLION.
A901 3" = 1'-0"



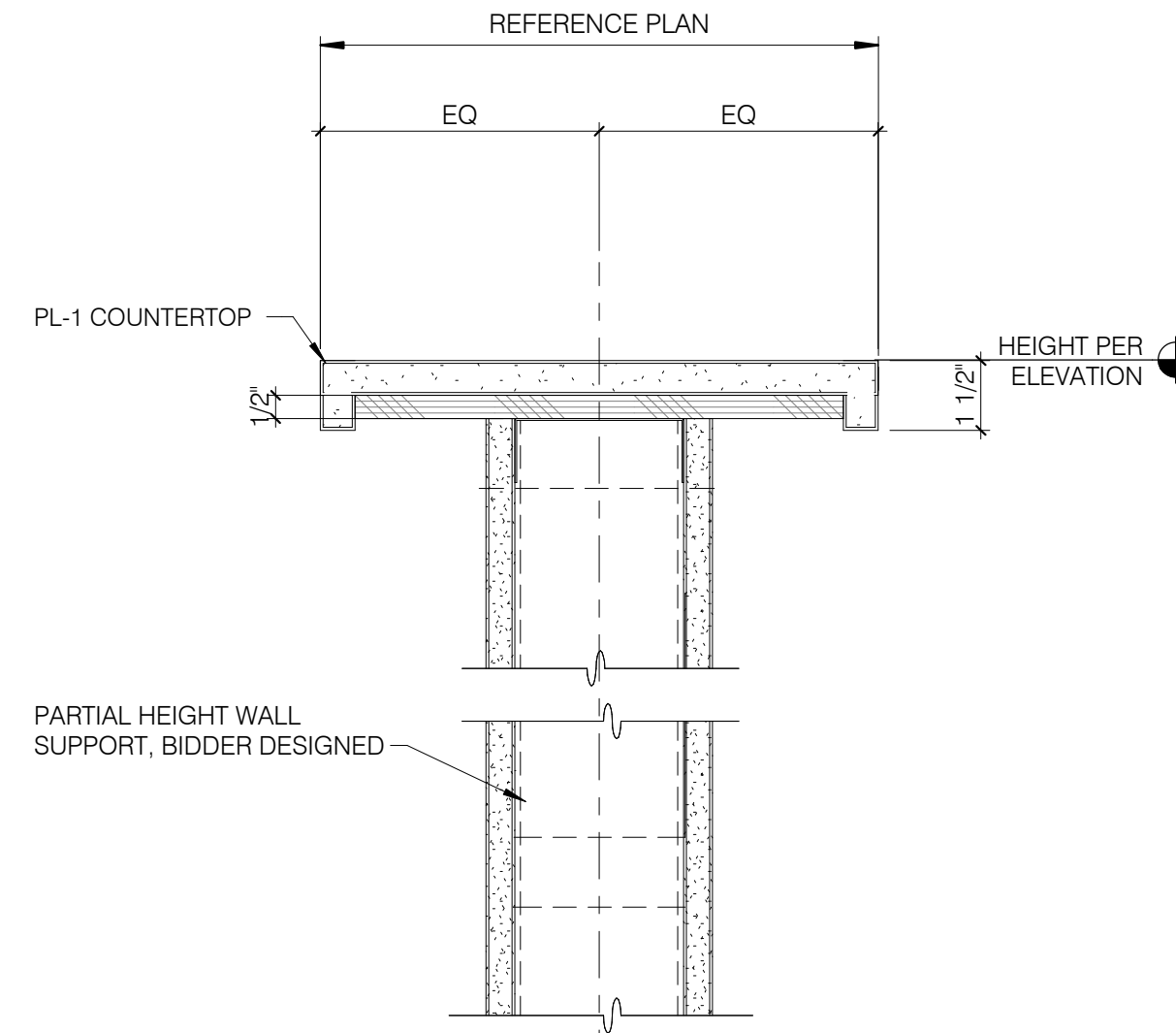
1. RECESSED GLAZING AT OPEN OFFICE PARTITION WALL
A901 3" = 1'-0"



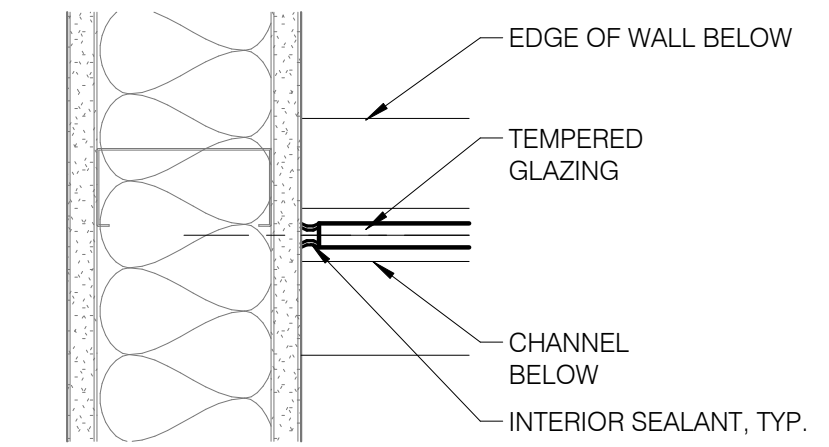
11. GLASS WALL AT RETURN FRAMING, PLAN DETAIL
A901 3" = 1'-0"



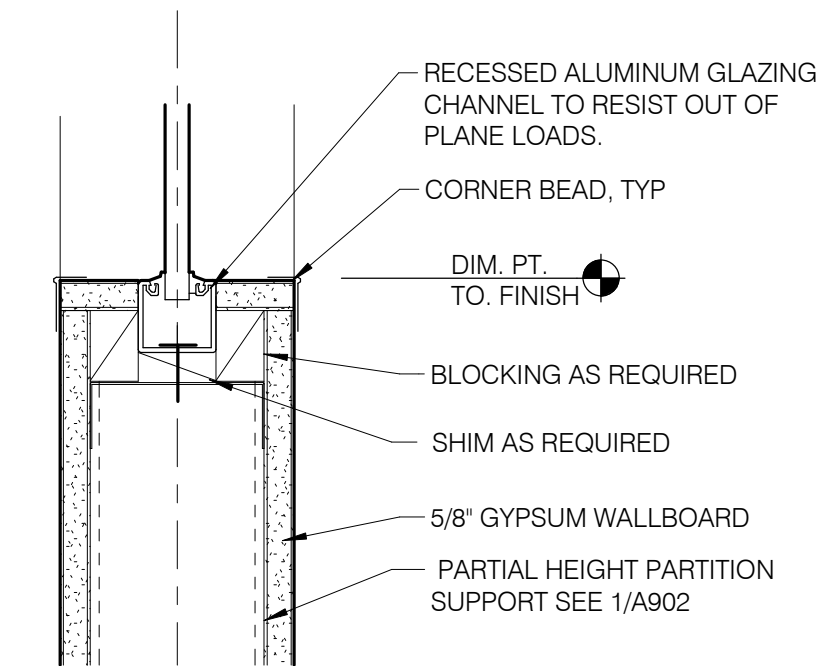
9. GLAZING AT TRANSON - PLAN DETAIL
A901 3" = 1'-0"



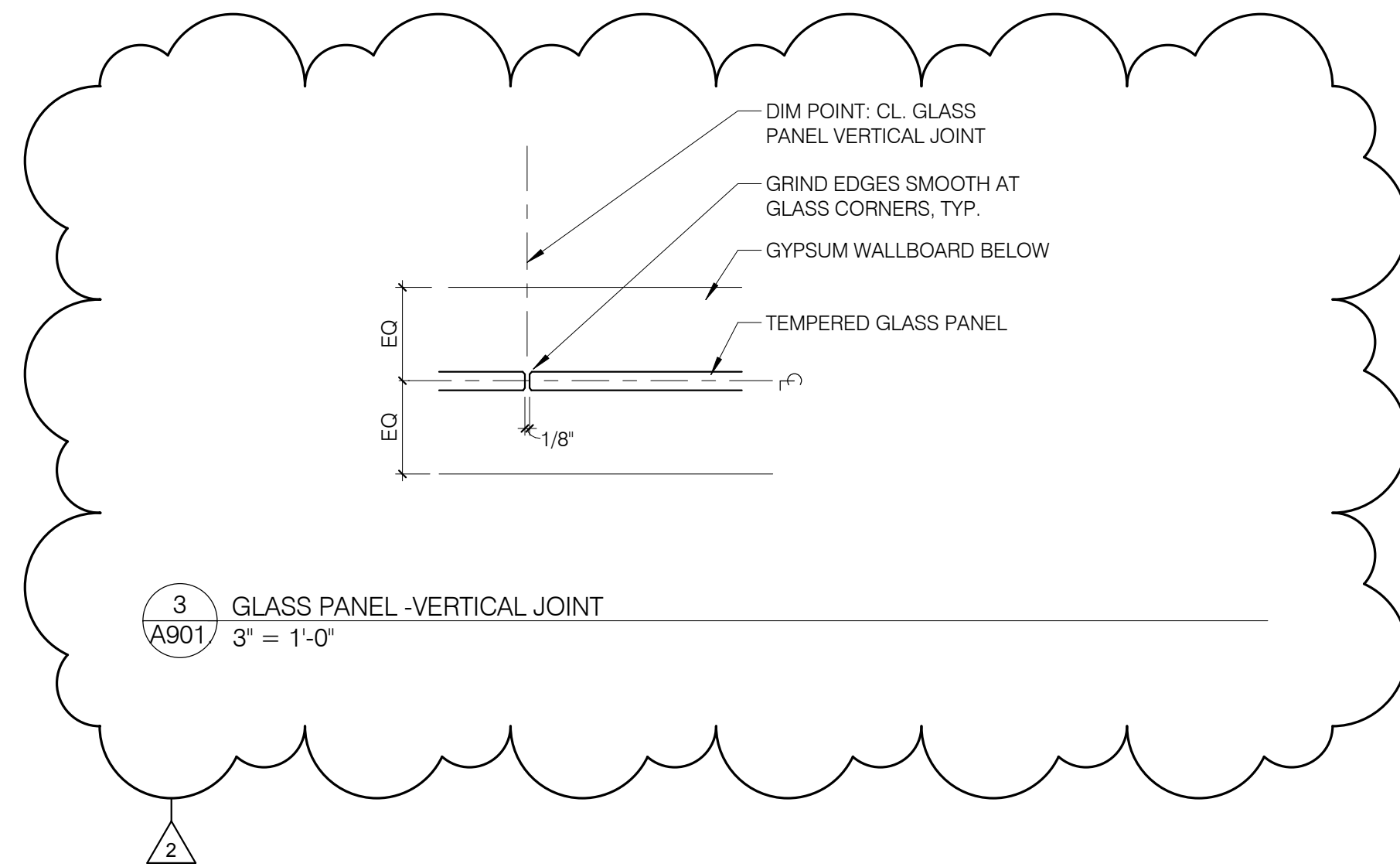
6. TRANSACTION COUNTER AT PARTIAL HEIGHT WALL
A901 3" = 1'-0"



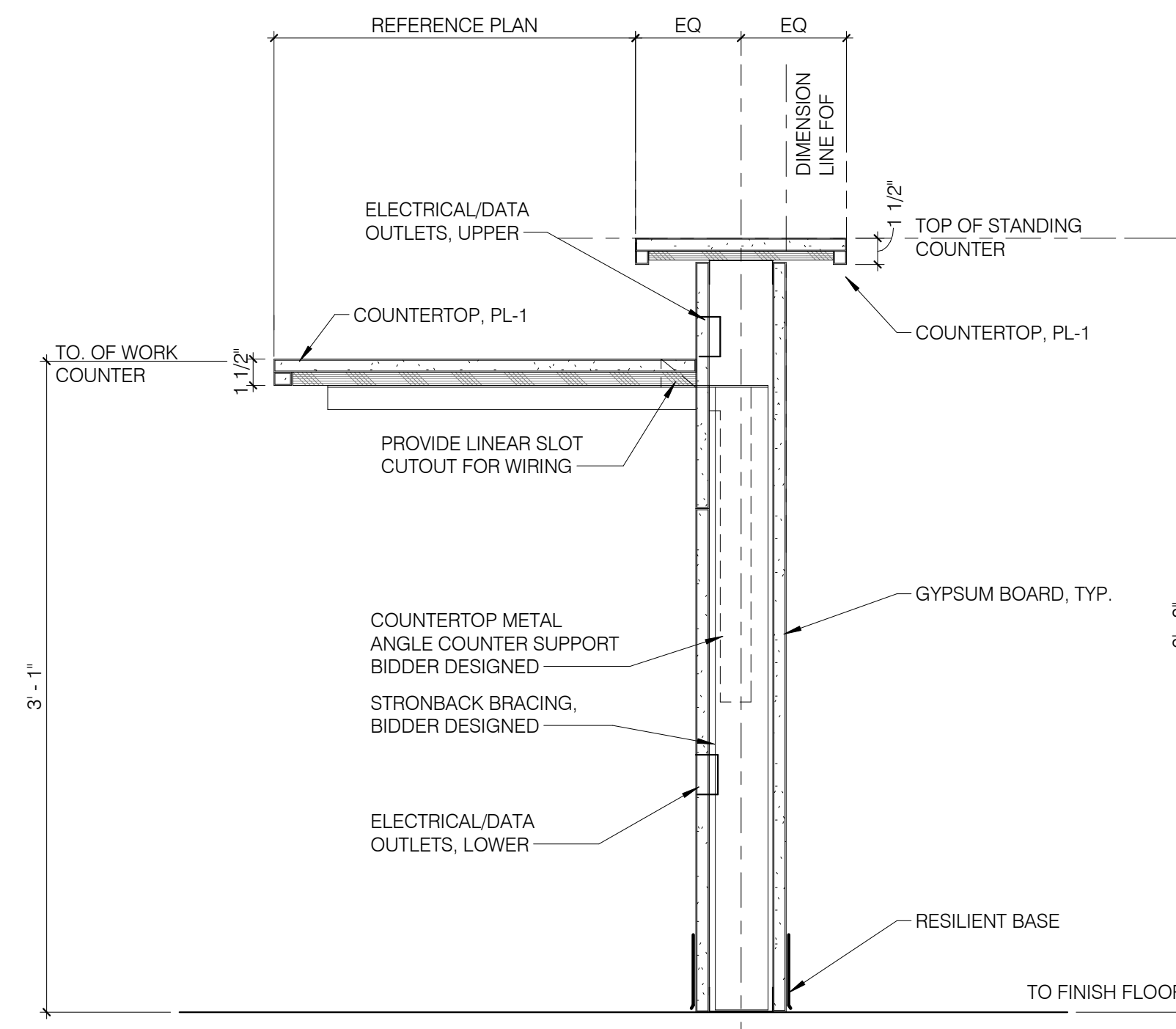
2. INTERIOR GLAZING AT WALL - PLAN DETAIL
A901 3" = 1'-0"



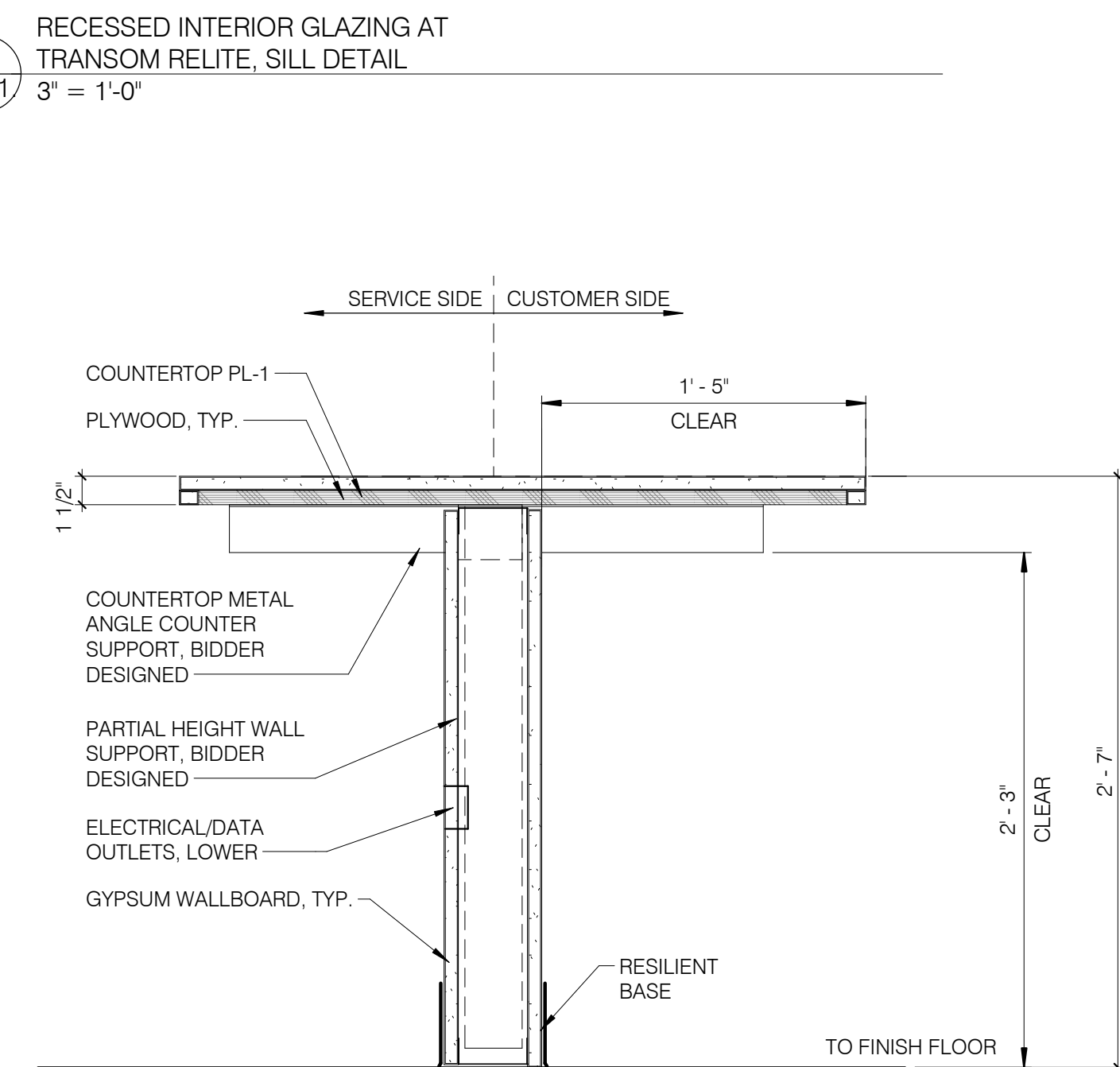
3. RECESSED INTERIOR GLAZING AT TRANSON RELITE, SILL DETAIL
A901 3" = 1'-0"



3. GLASS PANEL - VERTICAL JOINT
A901 3" = 1'-0"



7. TRANSACTION COUNTER AT FINANCE
A901 1 1/2" = 1'-0"



4. ADA TRANSACTION COUNTER
A901 1 1/2" = 1'-0"

Hennebery Eddy Architects

Inc.
921 SW WASHINGTON STREET SUITE 250
PORTLAND OREGON 97205
503 227 4860 TEL
503 227 4920 FAX
www.henneberyyeddy.com
CITY OF BEAVERTON

BEAVERTON BUILDING
2ND FLOOR FINANCE
TENANT IMPROVEMENT
12725 SW MILIKAN WAY
BEAVERTON, OR 97006

HEA Project no. 16008
Date: 05.01.2017
PERMIT SET / CONSTRUCTION SET

Revisions:
2 | 08/09/17 | Bid Addendum

PERMIT SET / CONSTRUCTION SET

Drawn by: C.J.
Checked by: DP
Sheet: INTERIOR DETAILS

A901.
Copyright 2016 Hennebery Eddy Architects, Inc.